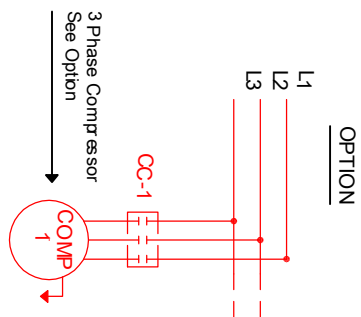
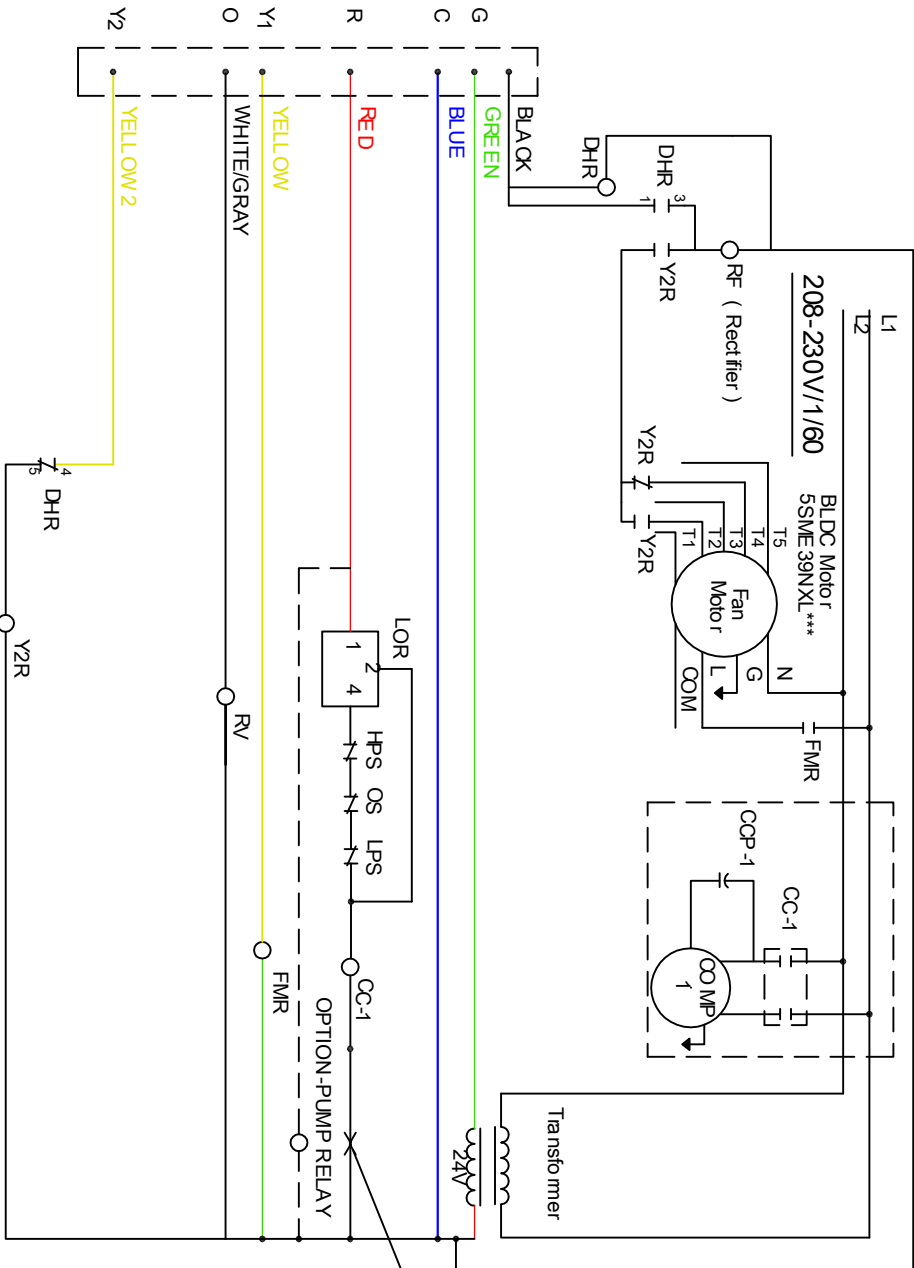


2 Speed NO Board w/ Dehumidification

1 COMP 1 CIRCUIT - SINGLE PHASE

WD1020



LEGEND

RF	- Rectifier
COMP	- Compressor
CC	- Contactor
CCP	- Compressor Capacitor
Y2R	- Y2 Relay
FMR	- Fan Motor Relay
DHR	- Dehumidification Relay

LEGEND

TR	- TRANSFORMER	FMC	- FAN MOTOR CAPACITOR
COMP	- COMPRESSOR	LPS	- LOW PRESSURE SWITCH
CC	- CONTACTOR	LOR	- LOCK OUT RELAY
CCP	- COMPRESSOR CAPACITOR	HPS	- HIGH PRESSURE SWITCH
FM	- FAN MOTOR	OS	- CONDENSATE OVER-FLOW SWITCH
FMR	- FAN MOTOR RELAY	RV	- REVERSING VALVE

NOTES: Compressor & blower motor internally thermally protected. For line voltage wiring use copper conductors only. All wiring to the unit must comply with local electrical codes.

**For Non BLDC Motor & When Applicable