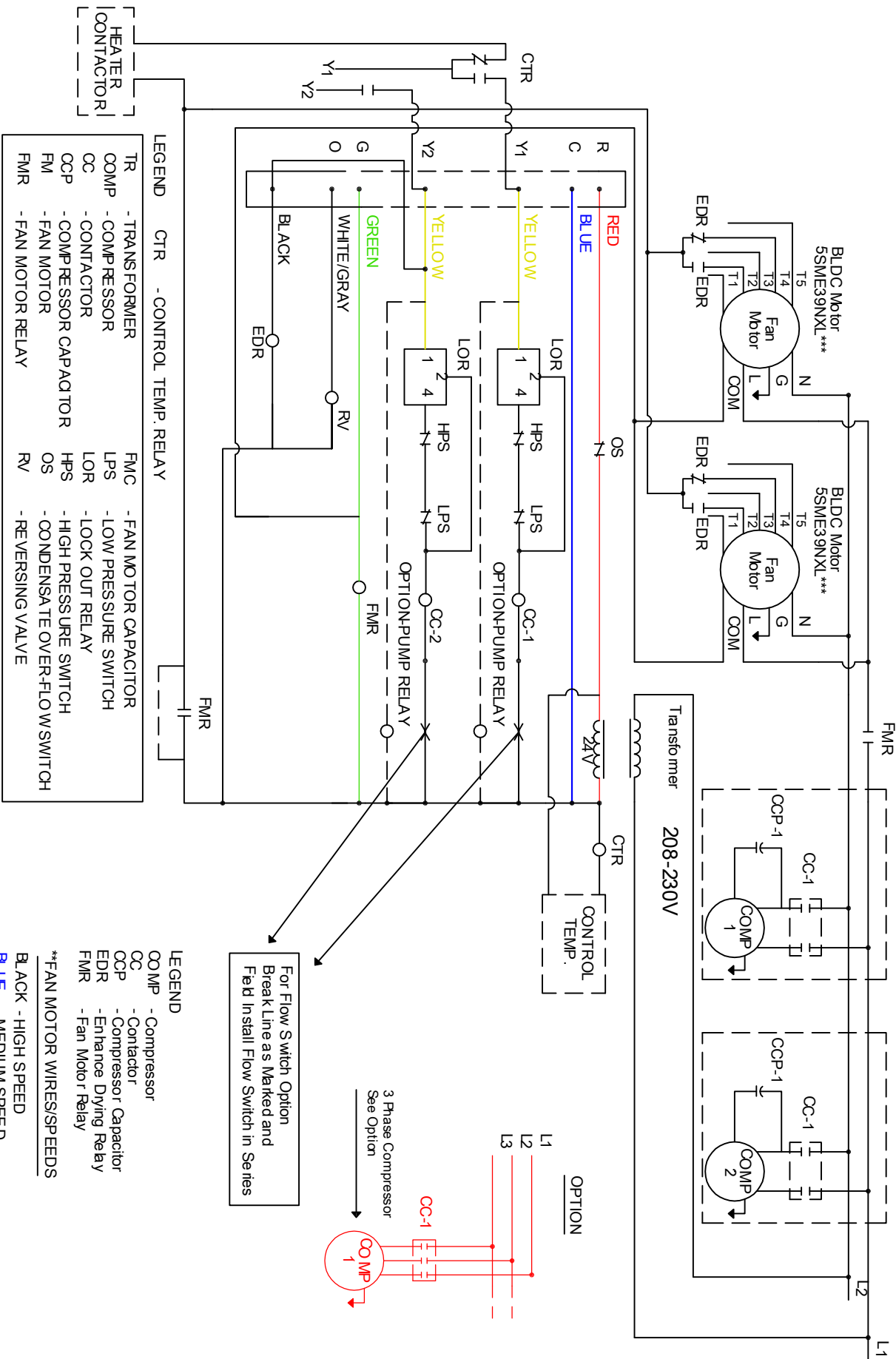


2 Speed NO Board

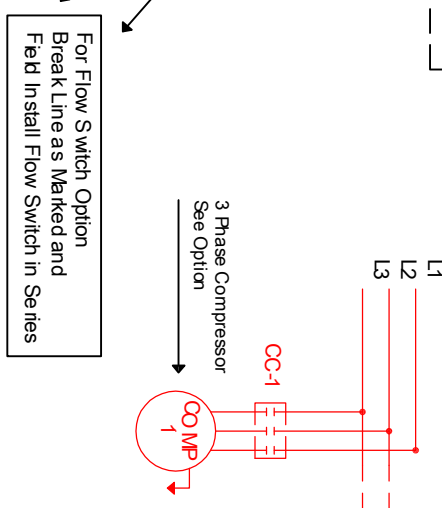
208-230V/1/60

2 COMP 2 CIRCUIT - SINGLE PHASE

WD1027



NOTES: Compressor & blower motor internally thermally protected. For line voltage wiring use copper conductors only. All wiring to the unit must comply with local electrical codes.



For Flow Switch Option
Break Line as Marked and
Field Install Flow Switch in Series

- LEGEND
- CTR - CONTROL TEMP. RELAY
 - TR - TRANSFORMER
 - COMP - COMPRESSOR
 - CC - CAPACITOR
 - CCP - COMPRESSOR CAPACITOR
 - FM - FAN MOTOR
 - FMR - FAN MOTOR RELAY
 - FMC - FAN MOTOR CAPACITOR
 - LPS - LOW PRESSURE SWITCH
 - LOR - LOCK OUT RELAY
 - HPS - HIGH PRESSURE SWITCH
 - OS - CONDENSATE OVER-FLOW SWITCH
 - RV - REVERSING VALVE
 - BLACK - HIGH SPEED
 - BLUE - MEDIUM SPEED
 - RED - LOW SPEED
- **FAN MOTOR WIRES/SPEEDS